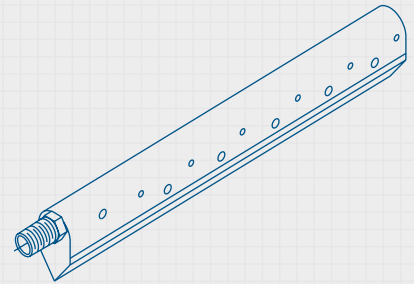


Stainless Steel Wide Band Coarse Bubble Aeration Systems

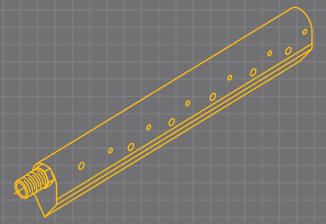


Sanitaire



ITT Industries
Engineered for life

Stainless Steel Wide Band Coarse Bubble Aeration Systems



Technology You Can Count On

Sanitaire pioneered the concept of wide band aeration with the introduction of the SANITAIRE® Stainless Steel Non-Clog diffuser in 1967. Since its introduction, the SANITAIRE wide band diffuser has become the standard in the industry with over 500,000 units in service.

The SANITAIRE coarse bubble diffuser is designed to introduce oxygen and provide mixing in wastewater treatment applications. The diffusers are typically used in high rate, conventional and extended aeration activated sludge processes. Other applications include aerobic sludge digestion, sludge holding, flow equalization, channel aeration and any similar application requiring a non-clogging, maintenance free diffuser system.

The SANITAIRE diffuser is available in fixed, swing or liftout header configurations depending on the application.

SANITAIRE Wide Band Diffuser Features

- Efficient wide band aeration achieved by 48" (122 cm) perimeter of air release.
- Innovative inverted air reservoir design, with dual horizontal levels of diffusion ports on the diffuser sides for uniform air distribution.
- Air reservoir design creates a pocket of air in the center of the diffuser to reduce clogging associated with other types of diffusers.
- Bottom deflector limits debris from entering the diffuser.
- Stainless steel material provides corrosion resistance and structural integrity.
- Cast stainless steel alloy end cap with 3/4" NPT schedule 80 rectangular nipple for long-term durability.
- Low headloss design provides reduced blower pressure and horsepower requirements.
- Available in 24" (61-cm) and 12" (30-cm) lengths.



Retrievable Hoist

Designed to retrieve swing and removable header systems

Engineering Features

- Van Stone type flanged joints allow individual header sections to rotate independently of adjacent sections during installations. This allows accurate alignment, leveling and rotational adjustments.
- Provisions for thermal expansion and contraction are engineered into the system with specially designed supports and pipe joints.
- Header system can be installed in any tank configuration.
- Full immersion passivation is used after fabrication for cleaning welded stainless steel products to prevent corrosion on both the inside and outside of the pipe.
- Corrosion-resistant material (304L/316L stainless steel) resulting in long-term durability.

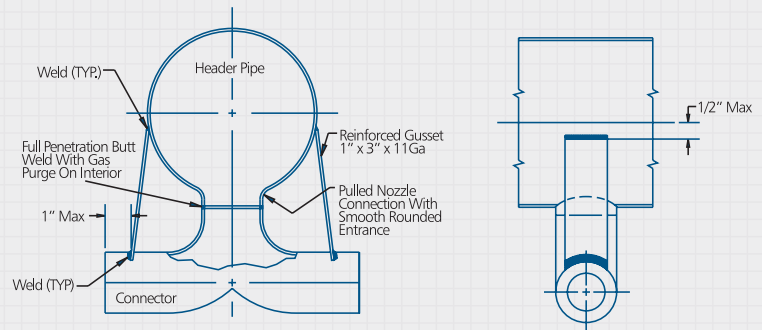
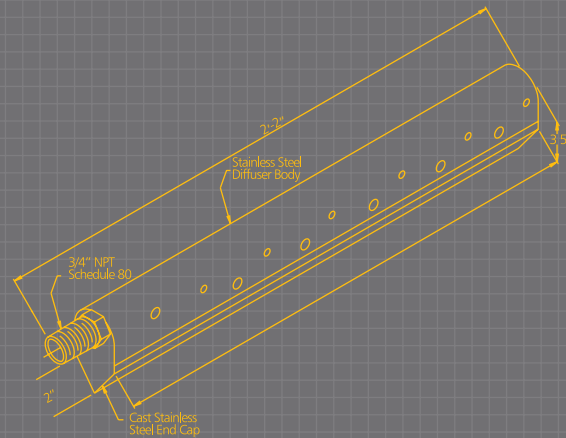
Gusseted Diffuser Connector

- Bottom mounted diffuser connector designed to continually purge and exclude solids.
- Reinforced gussets for maximum strength provide long term protection from cyclical vibrational forces.
- Pulled port with smooth rounded entrance designed for low headloss. Eliminates internal crevices that can be a site for solids adhesion and corrosion.

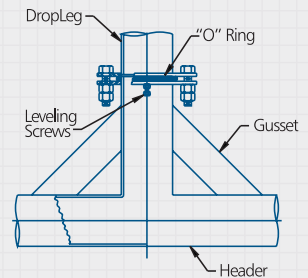
Swing and Lift Out Adjustable Header Connection

- Reinforced gusseting for maximum strength.
- Adjustable flange designed for accurate alignment and leveling of the air header.

D-24 Wide Band Diffuser



Gusseted Diffuser Connector



Swing and Lift Out Adjustable Header

Options

Swing Header



Designed for applications requiring frequent retrievability for basin clean out

Fixed Header



For conventional fixed to the floor application

Liftout Header



Designed for applications requiring less frequent retrievability for basin clean out

Oxygen Transfer & Power Savings

- Efficient transfer of oxygen:
 - Up to 5.5 lbs. oxygen per horsepower hour.
 - Over 400 lbs. of oxygen per 1,000 cubic feet of tank volume per day.
- Wide band design for complete mixing and effective floc formation.
- Largest oxygen transfer database of any diffused aeration manufacturer for accurate process application.

Installation Features

- Swing and removable header equipment is adaptable to T or Y wall tank construction.
- Header sections are lightweight and easily handled.
- Support stands are designed for fast, easy adjustment and installation.
- Van Stone type flange joints designed for ease of installation and leveling.

Applications

- Aeration Tanks
- Aerated Channels
- Nitrification Tanks
- Equalization Tanks
- Stormwater holding basins
- Aerobic Digestors
- Stripping
- Ozone
- Sludge Storage
- Grit Chambers
- Sequencing Batch Reactors
- Membrane Bioreactors



Contact Sanitaire - the aeration leader for more information

9333 N. 49th Street
Brown Deer, WI 53223 USA
Tel 414 365 2200
Fax 414 365 2210
www.sanitaire.com

Sanitaire



ITT Industries
Engineered for life